



# ADVERTISEMENTS

# KIKK

## RADIO $\Delta$ 65

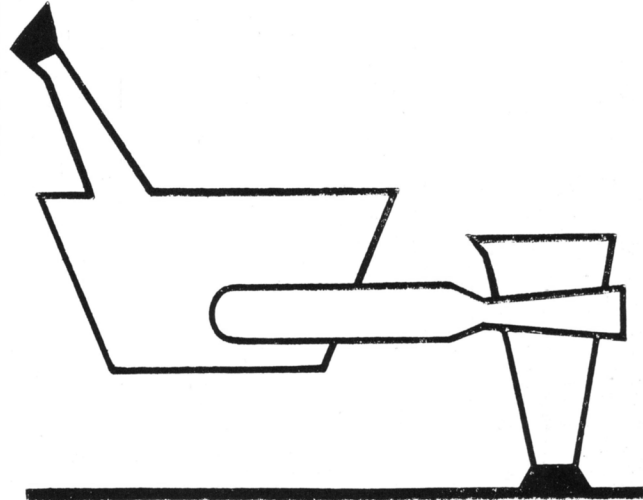
the  
counTRy  
GIANT



Mr. Lucas of Ross Lucas Motor Co. Inc.

## Ross Lucas Motor Co. Inc.

1905 S. Shaver GR 3-8181



## ABEL'S PHARMACY INC.

101 W. Southmore Pasadena, Texas

PHONE GR 3-6261

"Ask Your Doctor About Us"

We Deliver



## *Angel's Cafeteria & Grill*

1505 S. Main GR 2-0235

Day  
GR 2-1606

1201 Preston  
Pasadena, Texas

## HARVEY'S GARAGE

General Repairs  
Automatic Transmission  
Bear Front End Service

HARVEY LIVELY, Owner  
WRECKER SERVICE  
24-HOUR RADIO DISPATCH  
WA 6-0975



Ken White exhibits a Bob Morin car to Ronnie Avery.

## BOB MORIN MOTORS

USED CARS—BODY SHOP      3019 S. Shaver  
NEW CARS—SERVICE DEPT.    2801 S. Shaver

## BASS & MEINEKE AUTO PARTS

Wholesale and Retail  
PASADENA, TEXAS

## PASADENA KNIT SHOP

722 South Shaver

## KELLY'S PHARMACY

1348 E. Southmore  
GR 2-4394

## WILLINGHAM RAMBLER INC.

1625 Spencer    1201 Main

# DAVIS AUTOMOTIVE

Paint and Body

24-HOUR WRECKER SERVICE

2440 Pasadena Blvd.

GR 2-8087

- Quality Work
- Fast Service
- Reasonable Price

at

## ELMORES RADIATOR SERVICE

2440 Pasadena Blvd.

GR 3-0198



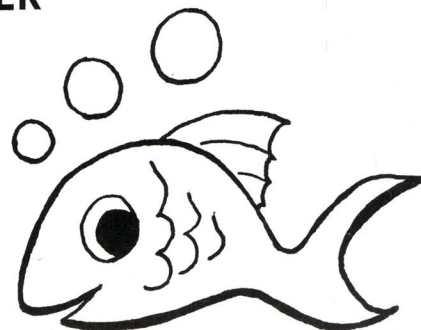
### MA'S MERCANTILE

Antiques  
Decorative Art  
Custom Work

703 E. HOUSTON

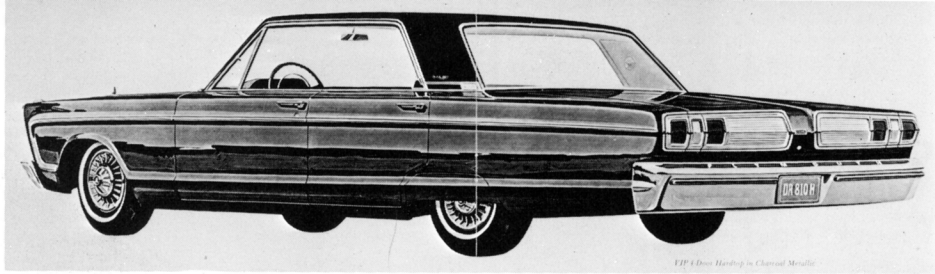
### AQUATIC CENTER

1505  
So. Richey



*Graham's*  
MEN AND BOYS  
MEYRLAND PLAZA—PASADENA PLAZA

A  
Complete World of Fashion  
for  
Men and Boys



Authorized Sales  
and Service



GR 2-3603  
1510 So. Richey  
Pasadena, Texas

## SOLLOCK-TURNER INC.

# oaks TV



604 W. Southmore

GR 3-4406

## HANCOCK TEXTILES

2120 South Shaver GR 3-7875

## SKYLARK CAMERA CO.

"Your Kodak Dealer for  
Pasadena"

109 WEST SOUTHMORE GR 2-5525

## MOREHEAD PACKING PLANT

4715 PINE • PH. HU 7-0176

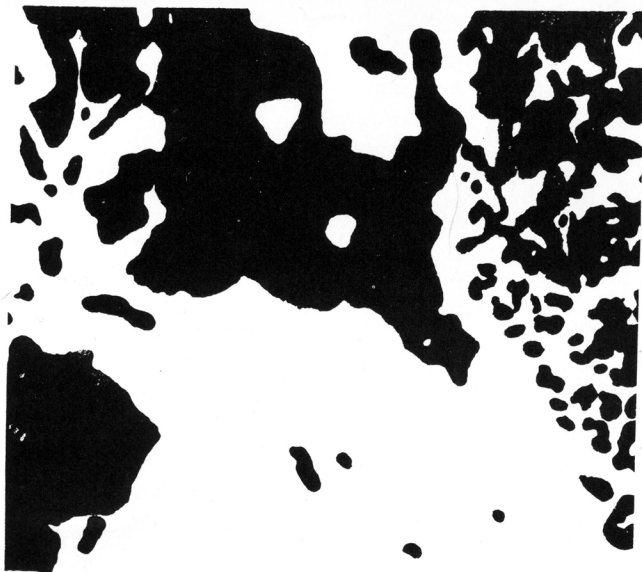
FEATURING—HEAVY NORTHERN BEEF  
SMOKED HAM • BACON • SAUSAGE • TURKEYS  
CUT, WRAPPED AND FROZEN FOR THE DEEP FREEZE  
PROCESSING WILD GAME • CUSTOM SLAUGHTERING

W. W. MOREHEAD SR. W. W. MOREHEAD, JR.



GERRY PETERS  
GR 3-5979

926 S. TATAR NIGHTS—GR 2-2855



if you seek it like silver and search for it as for hidden treasures; then you will understand the fear of the Lord and find the knowledge of God.

Proverbs 2:4,5 R.S.V.

## Hidden Treasure

SCRIPTURE HOUSE

A Religious Book Store

1612 E. Southmore GR 2-4964

# PEPSI-COLA

PEPSI-COLA BOTTLING  
CO. OF HOUSTON

6626 GULF FREEWAY

## DUGAN DRUGS

Fast Free Delivery  
Service

GR 2-1293 2801 RED BLUFF RD.



Savings Accounts  
Real Estate Loans

GR 3-5545 825 E. Southmore

2428 E. Southmore

## Kenny's Hair Fashions

The Cost Is So Little to Look Your Best

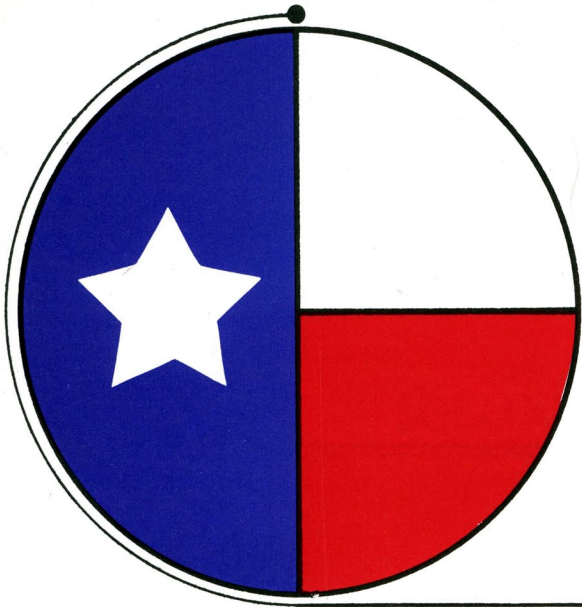
TELEPHONE  
GR 3-5655

SUE KENNEY  
Owner



OFFICE SUPPLY &  
PRINTING CO.

106 S. Main GR 2-5509



**A DYNAMIC SYMBOL...  
FOR A DYNAMIC BANK**

**SAN JACINTO STATE BANK**  
**"BUILDING WITH PASADENA"**

213 W SOUTHMORE      MEMBER FDIC

## SAN JACINTO TITLE COMPANY

1730 SOUTH RICHEY — P. O. BOX 112 — PASADENA, TEXAS

Telephone Greenwood 3-1736

GR 2-1529    GR 2-8331  
**PASADENA  
TV & ELECTRONICS**

DON BAECKER  
Owner

1102 S. SHAVER  
PASADENA, TEXAS



GEORGE R. HAM,  
Agent

1902 B, South Shaver    GR 3-8857



Kenny Rhinehart proudly pins a beautiful corsage on Marilyn Dubberly.



## *Cinderella's Flower Shop*

Complete Floral Service  
134 E. Southmore GR 2-3231



Barbara Covington displays an interesting item.

## *Treasure Isle*

3000 PASADENA PLAZA  
HU 6-5745

## ANN'S

TEENS  
PETITES  
JUNIORS

GR 3-6382  
2771 Red Bluff





JUNIOR CLASS OFFICERS: President Roger Gay, Secretary Claudia Lindsay, Vice President Cindy Chadwick, Treasurer Jean McKown, Historian Natica Davis, and Parliamentarian Billy Shoppe.

# OSBORNE-APPLE FORD, INC.

**Your Home-Owned, Home-Operated,  
Authorized Ford Dealer**

GR 3-8131

1616 S. Richey



**FIRST PASADENA STATE BANK**



Annette Corder and Jay Pearson are about to enjoy a delicious meal at Bob Holcomb's.

## **BOB HOLCOMB'S BAR-B-Q**

**Custom Cooking and Catering**

1112 Spencer Hwy.  
HU 6-8582

301 Sterling  
GR 2-8842



**P B N**

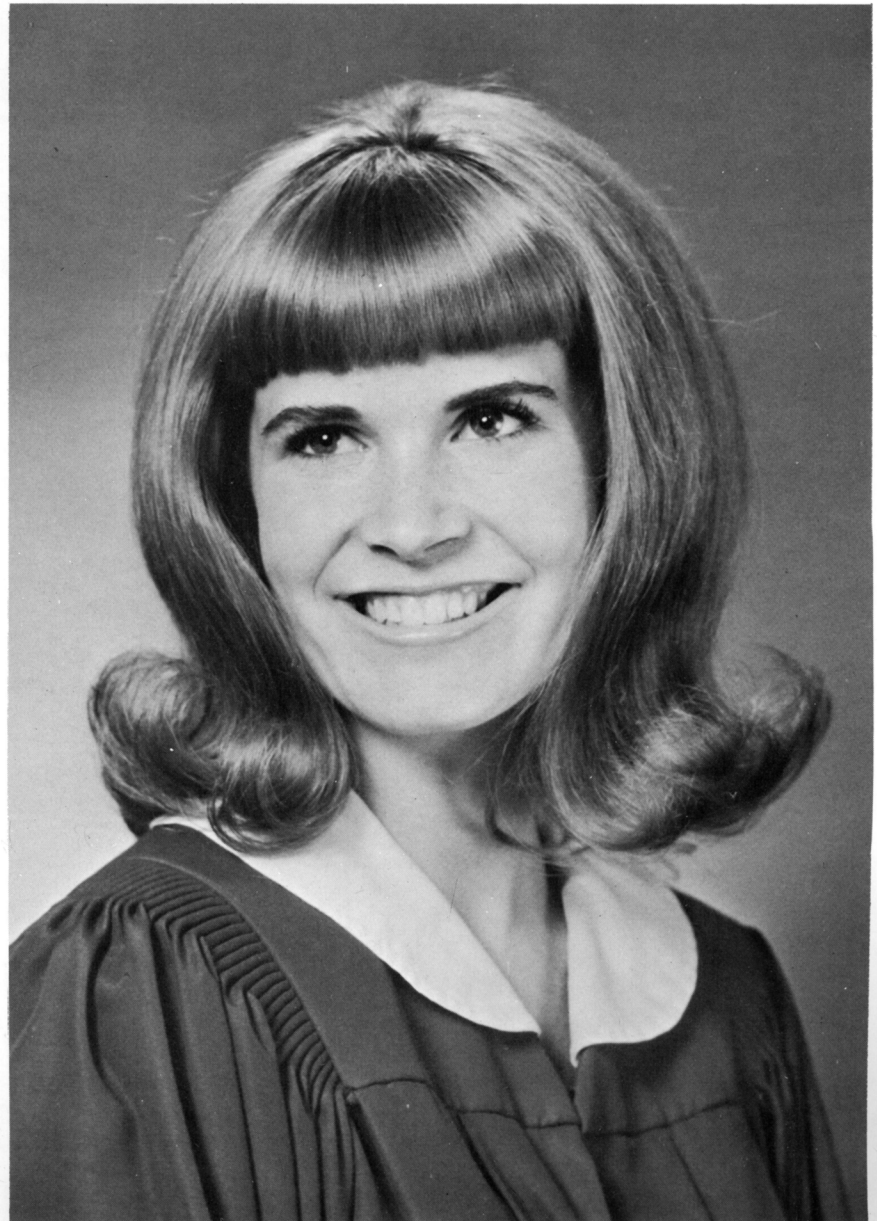
***Pasadena National Bank***

*the gift  
that only*

**YOU**

*can give...* **YOUR PHOTOGRAPH**

*For those who take great pride in you, there  
is no more appreciated gift than your photograph.  
Come to your Official Photographer when you  
need distinguished portraits to give on memorable occasions.*



*Joske's*  
**JOSKE'S**  
HOUSTON

# WHATABURGER

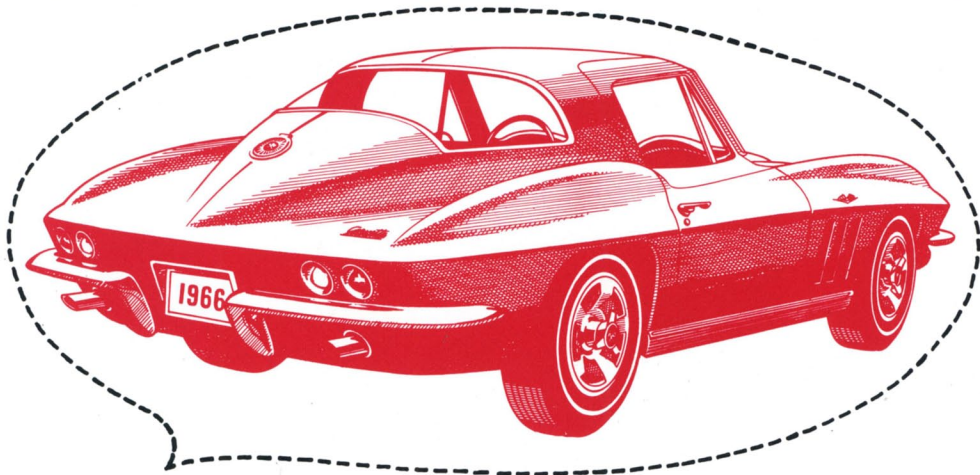
*'World's Largest Pure Beef Hamburger'*



1301 E. Southmore

1734 Ritchey

2301 Spencer



H-m-m-m. Graduation at last!  
Now I can start on that  
Sting Ray from  
Boyd Mullen Chevrolet.



# HAPPINESS IS A STAR ENGRAVING CO.

Senior Ring From Pasadena Hardware  
and Sporting Goods (Invitations Too!)



## Paul's Coney Island

for delicious food  
1607 SO. RICHEY GR 2-9167



The Store  
With a  
Heart

2815 Strawberry

HU 4-6963



*Adam's*

*Flower & Gift  
Shop*

Pasadena Plaza Service  
Center HU 6051



Jimmy Thomason displays a memory book to Cathleen Collins.

# Thomason Brothers Jewelry

901 E. Shaw

GR 2-3535



Shoes from **Ellis**  
look better  
Southmore at Shaver



Serving—  
Houston, Galveston, Pasadena,  
NASA and Surrounding Areas

A General Bookstore—  
Complete Selection of  
Hardbacks and Paperbacks

Mail Orders • Phone Orders • Special Orders

1605 S. RICHEY GR 3-3648



## Bowling

BICYCLE AND LAWNMOWER  
SERVICE

2037 S. Richey GR 2-6651



## Abbott Florist Inc.

101 S. Richey • Pasadena, Texas • GR 2-3681  
364

Karen Logan admires  
one of Solomon's  
beautiful fabrics.



## Solomon Fabrics

"Sew What's  
New"

1311 South Richey GR 3-2758  
305 Pasadena Plaza  
Service Center HU 6-5353



# PIONEER WELL TOOLS

Congratulations  
Seniors  
of '66

412 HOGAN

CA 7-8123



Sherra Strand and Susan Scott behind the counter  
at Candlewick's.

## Candlewick Sweet Shoppe

- Ice Cream
- Kosher Food

3106 Spencer Hwy.

HU 6-4162

## Higgason Jewelers

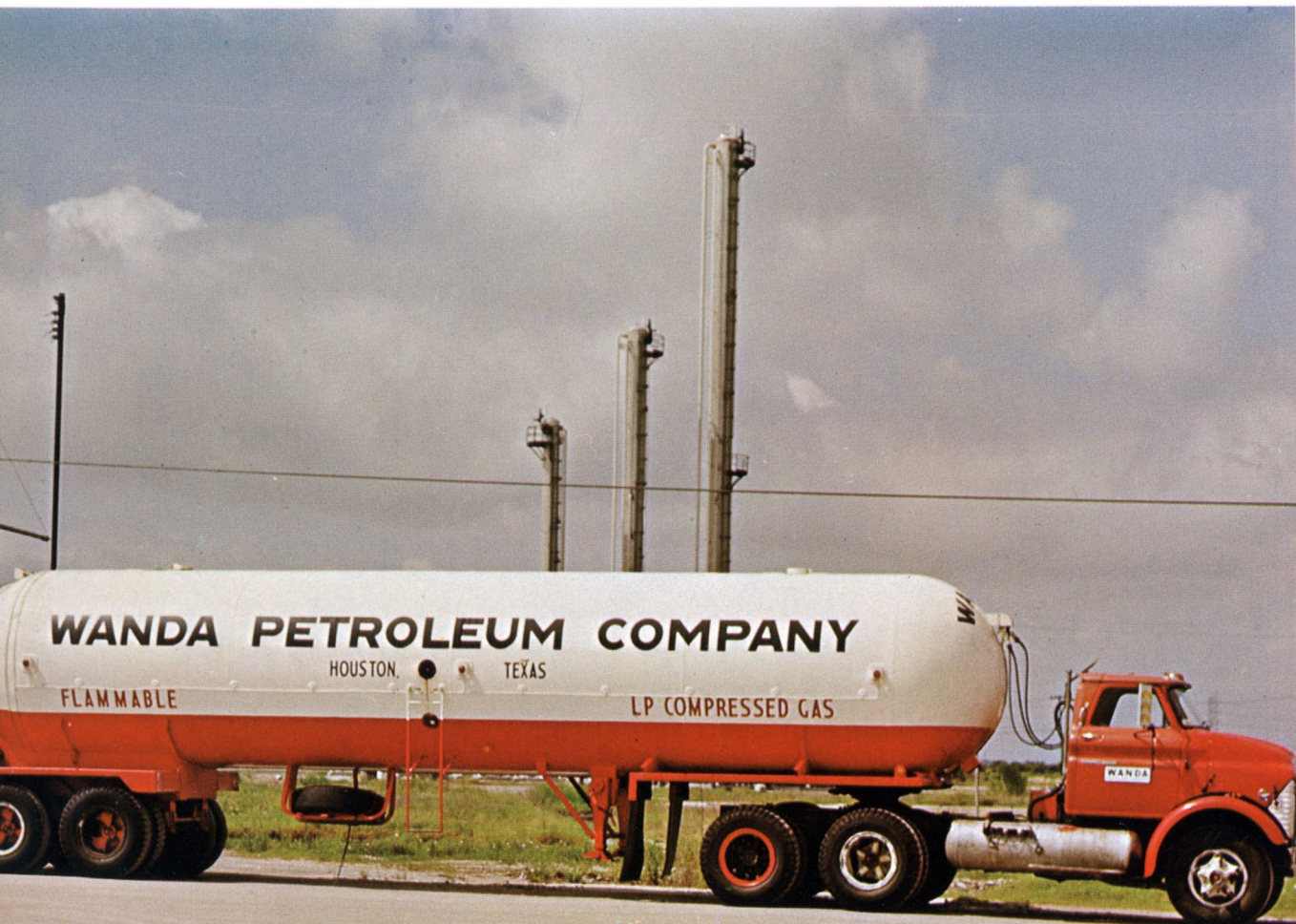


THE  
RINGS  
OF  
DISTINCTION



GR 3-3551  
2805 Red Bluff Rd.





**Wanda Petroleum Company Salutes  
the Seniors of 1966**

PHONE: CA 7-8181

P.O. BOX 53120

# Blankenship Flowers

Creation of  
Designs  
Made  
With You in  
Mind

Complete Floral  
Service

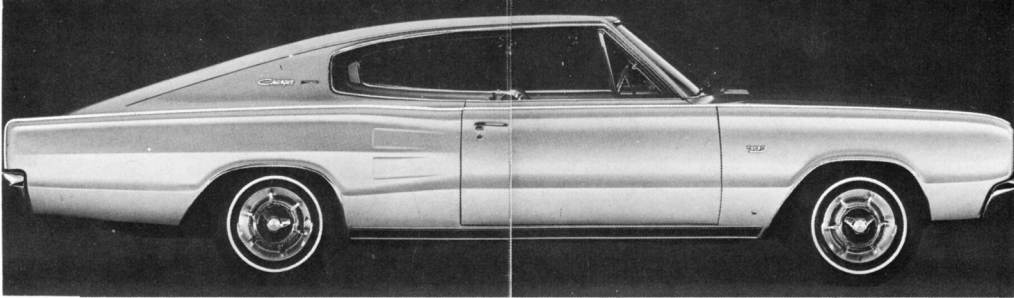
610 S. Main

GR 3-9512



Mrs. Blankenship exhibits a bridal bouquet to Kathy Malina.





With the **BIGGEST HEART** in Texas  
**PASADENA DODGE INC.**

1831 S. RICHEY

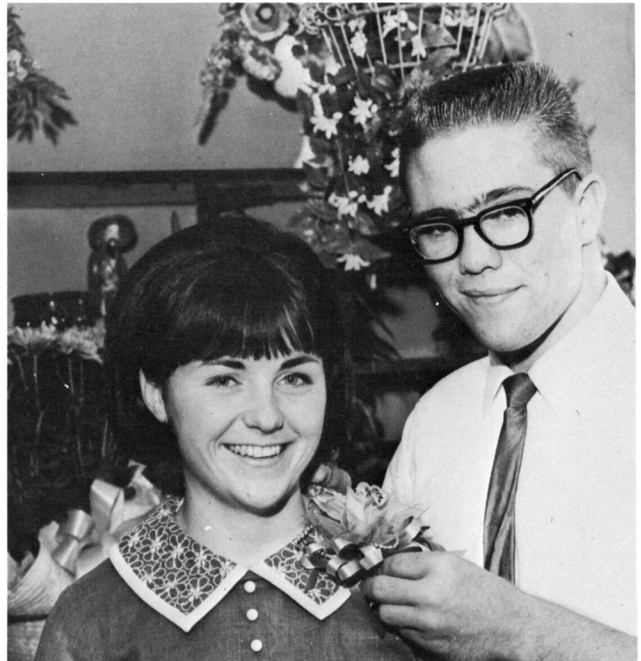
GR 3-9431



**Morgan's  
 Auto  
 Supplies**

1219 South St.

GR 3-1744



Alan Barnes pins a beautiful orchid on a delighted Gay Beall.

**Burleson  
 Florist**

1711 S. Shaver

GR 2-1204

**PASADENA  
 PUBLIC  
 LIBRARY**

1201 MINERVA

GR 3-4775

